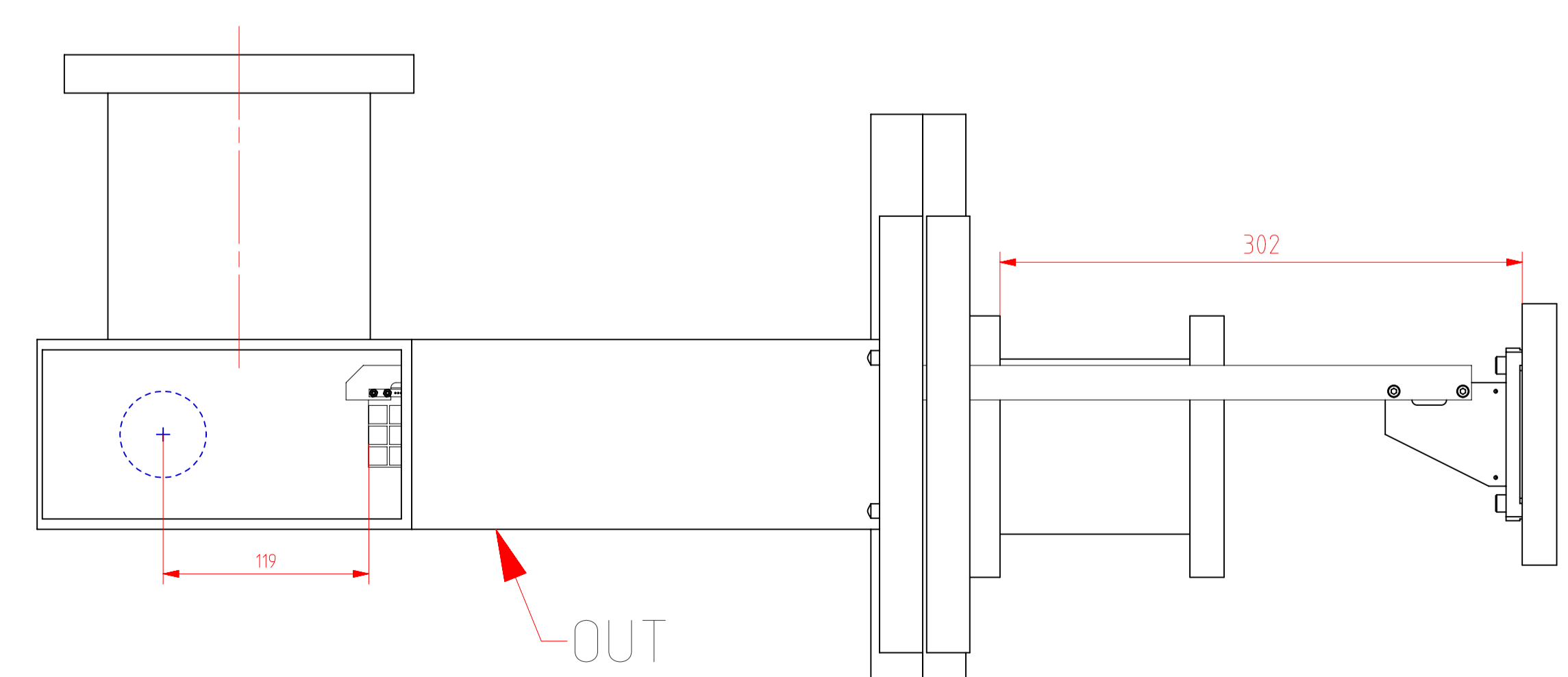
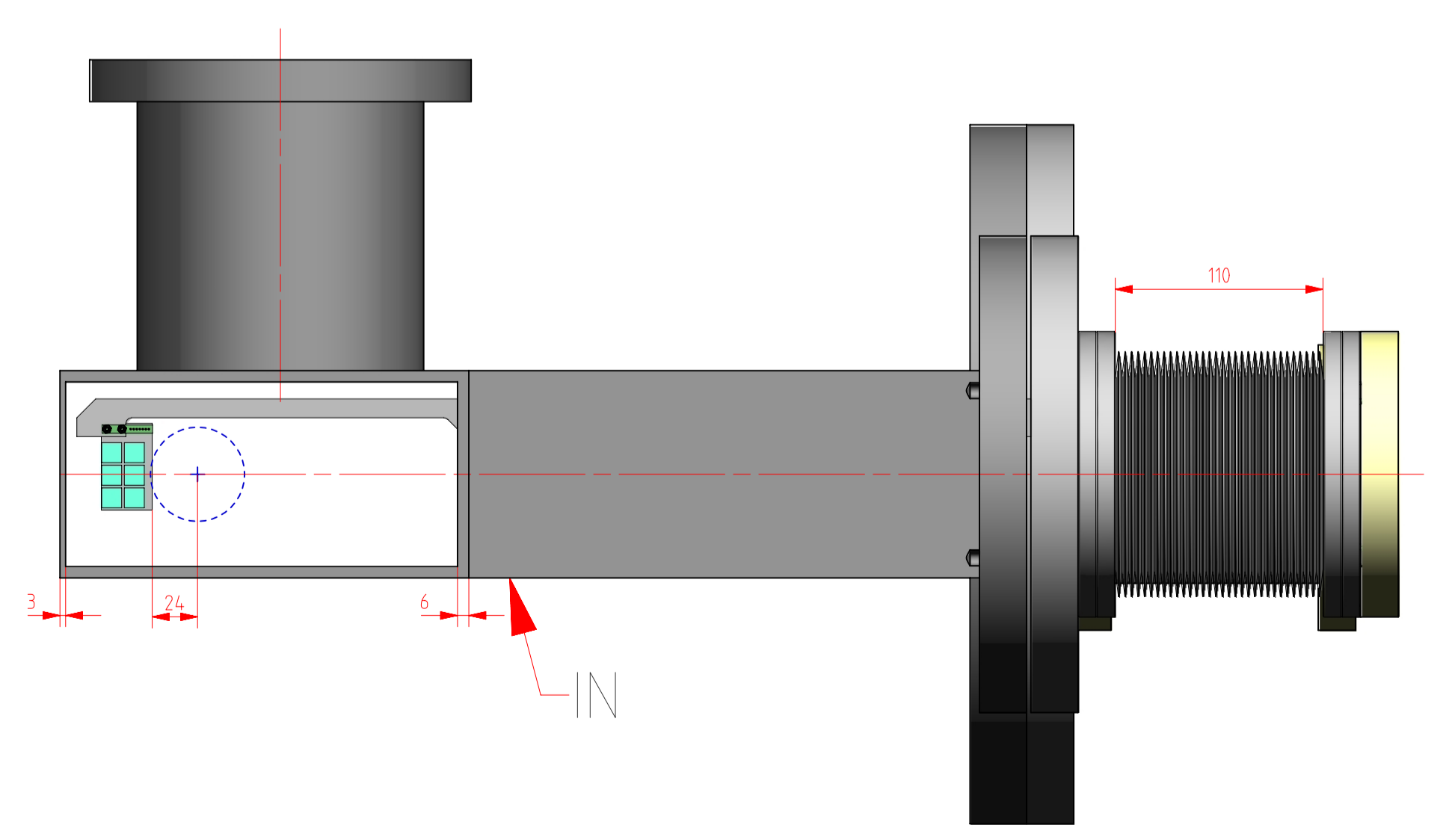


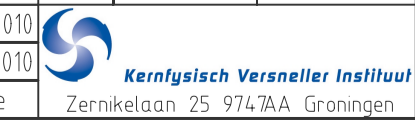
SECTION A-A
SCALE 2:3



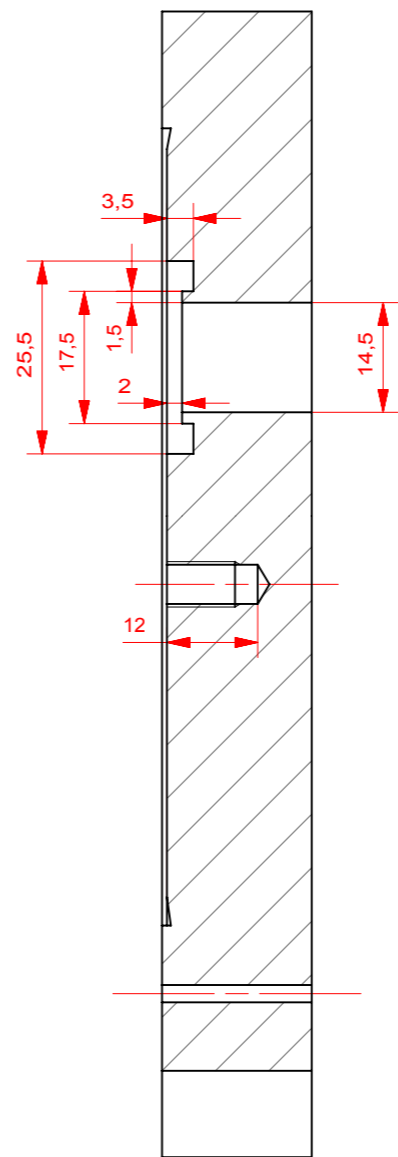
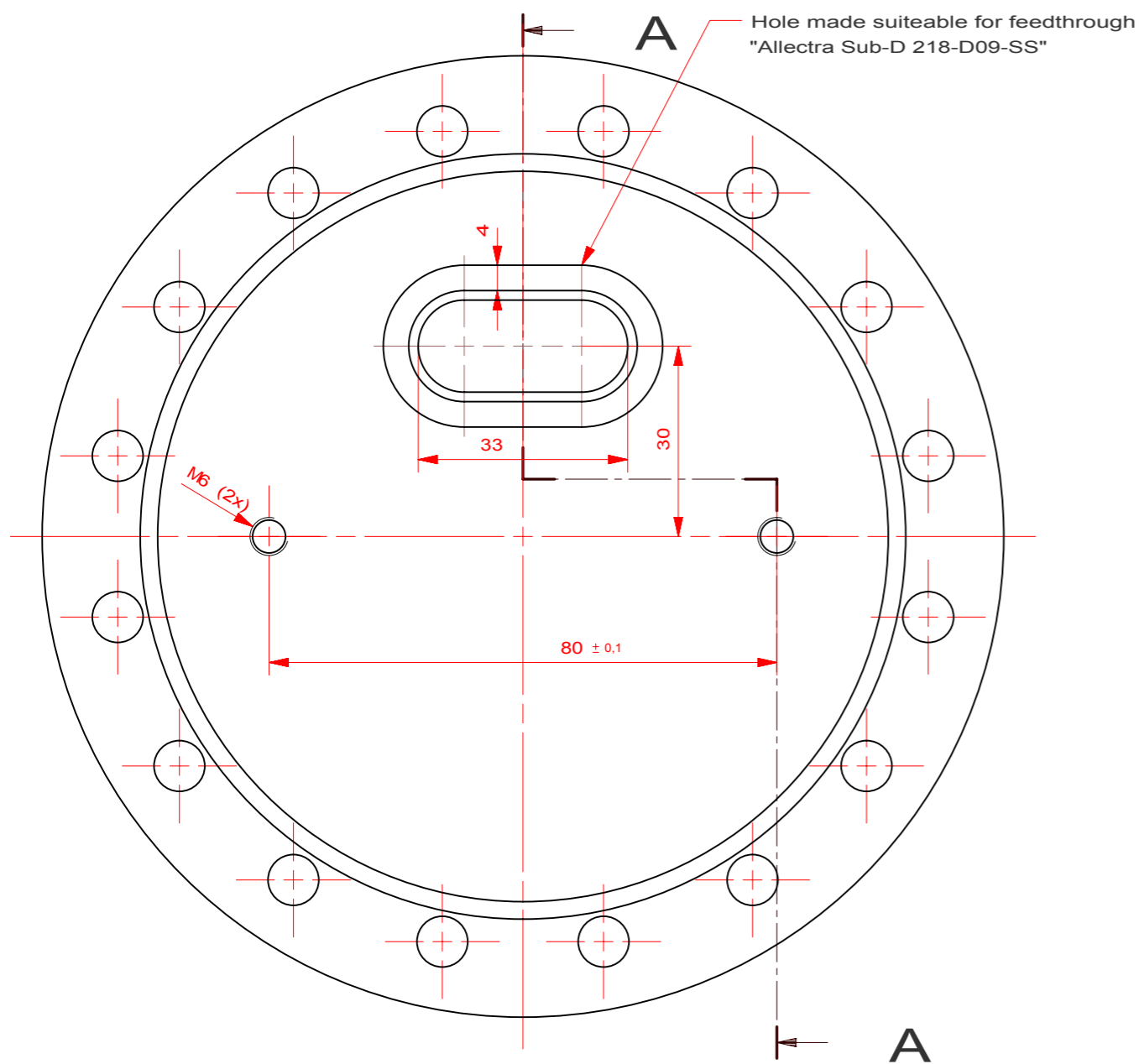
Shape- and dest.fal. acc.	Dim. tol. acc.	General Tolerances	Roughness acc.	mm	Scale
NEN-ISO 101	NEN-ISO 406	NEN-ISO 2768-1 m	NEN 3634		1:3
F		Date	Name	Project	Inring detector
E		Designed	2010	M.Lindemulder	Group
C		Drawn	2011	M.Lindemulder	Name
B		Cont.	-	-	Inring detector
A		Material	23-11-2010	-	Drawing number
1		Revision	Date	Zernikelaan 25 9743RA Groningen	3;1005;0000_dwg

Linear dimensions	Tolerance
0.5-3	±0.1
3-6	±0.1
6-30	±0.2
30-120	±0.3
120-400	±0.5
400-1000	±0.8
1000-2000	±1.2
2000-4000	±2
Broken edges	0.5-3
	3-6
	6-10
	10-50
Conners	±1°
	±0.30
	±0.20
	±0.10

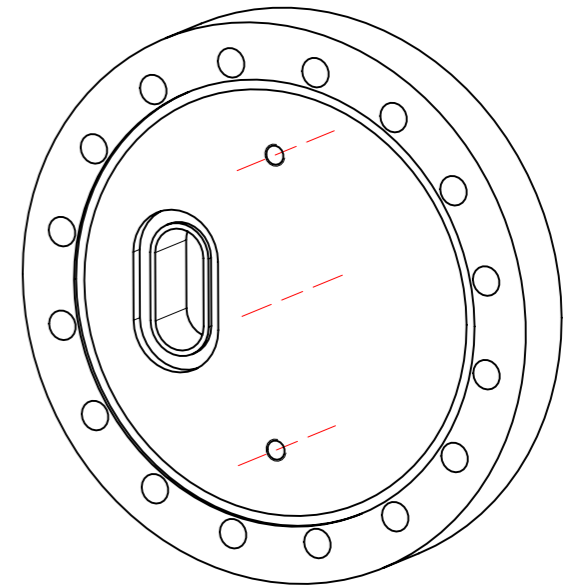
Projectcode 623001
Werkorder G1005
Dimensions
Material
Mass (kg)



Scale 1:3
Sheet 1/1




SECTION A-A

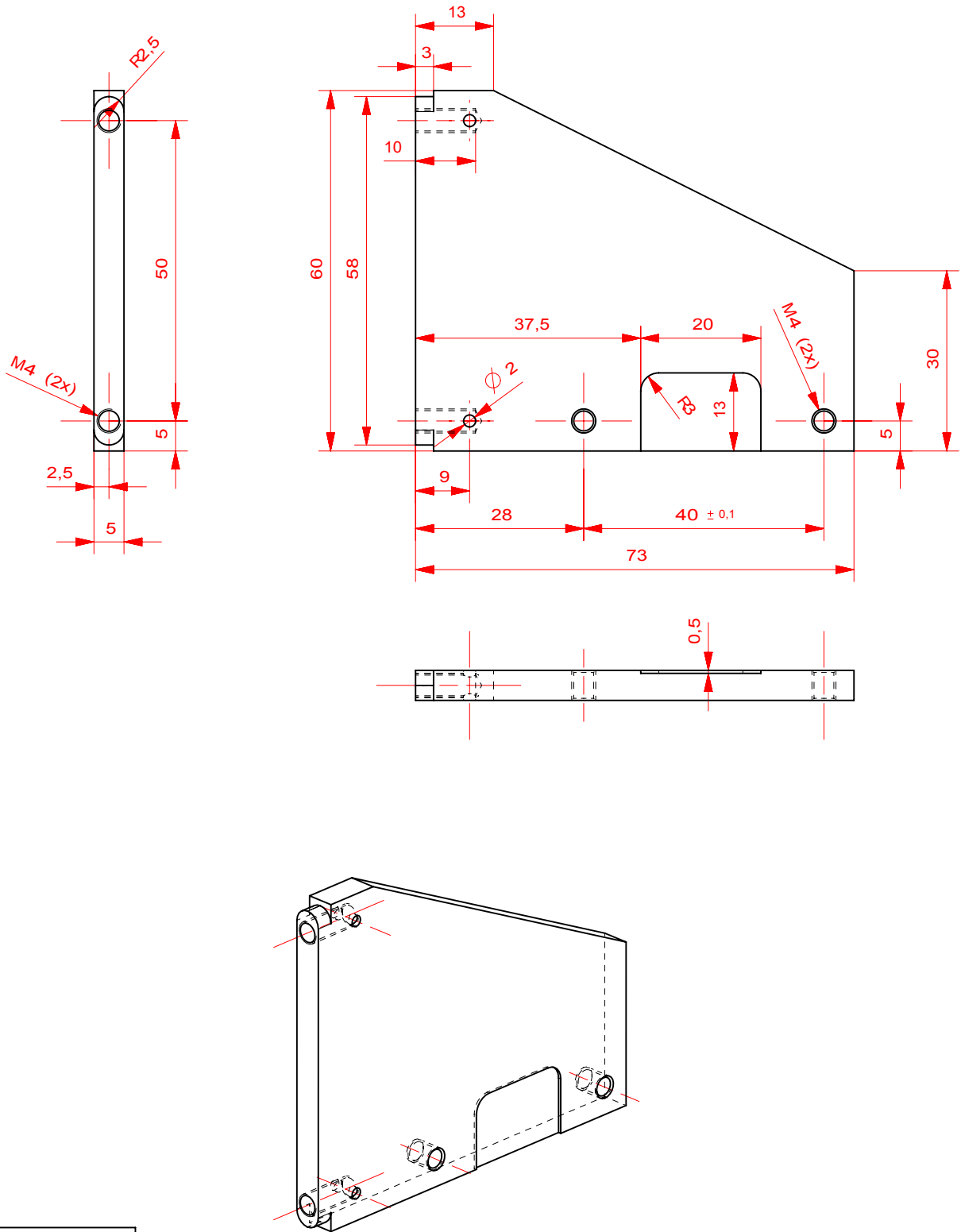


√ Ra 1,6 (√ Ra 0,8)

Projectcode: 623001
Werkorder: G1005
Dimensions: LxBxH
Material: 1.4429
Mass [kg]: kg

Shape- and dest.tol. acc. NEN-ISO 1101	Dim. tol. acc. NEN-ISO 406	General Tolerances NEN-ISO 2768-1 m	Roughness acc. NEN 3634	mm	Scale
F		Date:	Name:	Project: Nustar	1:1
E		Designed	2010 M.Lindemulder	Group: GSI	A3
D		Drawn	2010 M.Lindemulder	Name:	
C		Approved		CF-DN100	
B				Drawing number:	
A				3;1005;1000-01_dwg	
Revision	Date	 Kernfysisch Versneller Instituut Zernikelaan 25 9747AA Groningen			Sheet 1/1

Linear dimensions	Nominal dims.	Tolerance
0,5-3	± 0,1	
3-6	± 0,1	
6-30	± 0,2	
30-120	± 0,3	
120-400	± 0,5	
400-1000	± 0,8	
1000-2000	± 1,2	
2000-4000	± 2	
Broken edges	[mm]	[mm]
0,5-3	± 0,2	
3-6	± 0,5	
6-	± 1	
Comers	[mm]	[mm]
I-min. comerside	± 1°	
10-50	± 0° 30'	
50-120	± 0° 20'	
120-400	± 0° 10'	
400-	± 0° 5'	

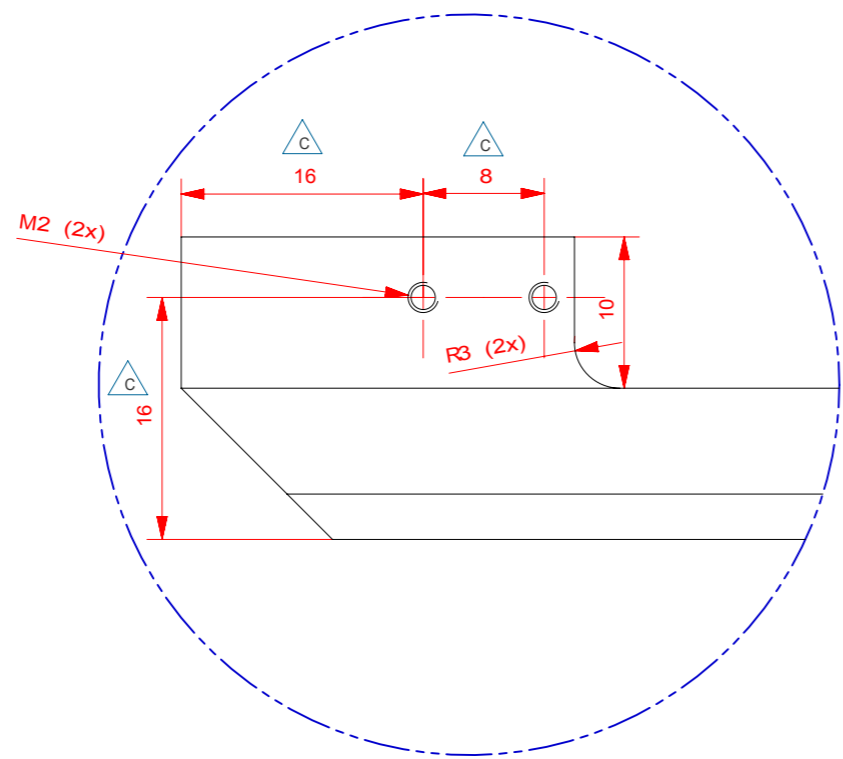
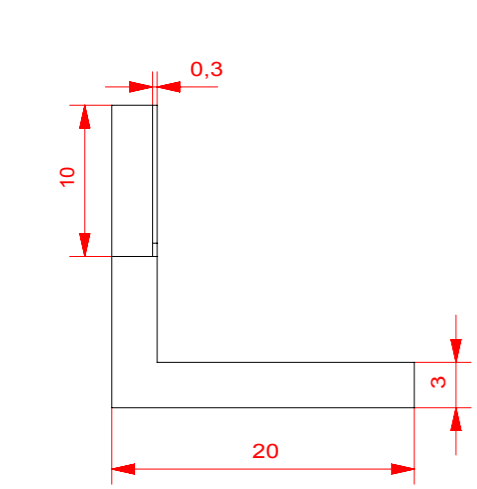
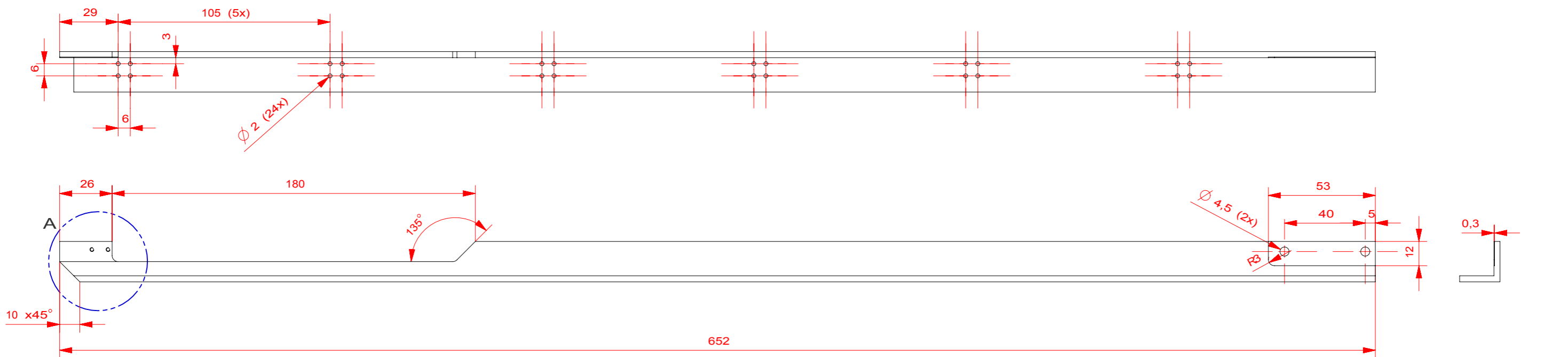


Projectcode: 623001
 Werkorder: G1005
 Dimensions: 73x60x5
 Material: AISI_316L_SS
 Mass [kg]: 0,13 kg

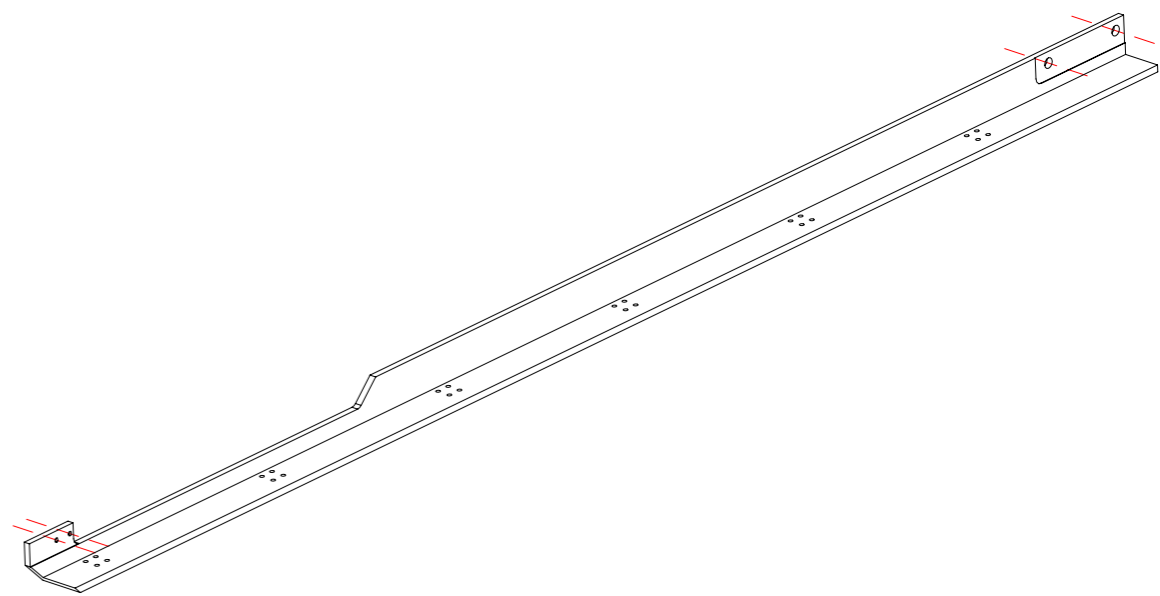


Shape- and dest.tol. acc. NEN-ISO 1101		Dim. tol. acc. NEN-ISO 406		General Tolerances NEN-ISO 2768-1 m		Roughness acc. NEN 3634		mm		Scale 1:1
F			Date:	Name:	Project: Nustar					
E		Designed	2010	M.Lindemulder	Group: GSI					
D		Drawn	2010	M.Lindemulder	Name:					
C		Cont		-	Mountingplate					
B					Drawing number:					
A					3;1005;1100-01_dwg					
Revision		Date		Zernikelaan 25 9747AA Groningen					Sheet 1/1	

400-	± 0° 5'
120-400	± 0° 10'
50-120	± 0° 20'
10-50	± 0° 30'
O-10	± 1°
I-min. cornerside tolerance	
Corners	
[mm]	[mm]
6-	± 1
3-6	± 0,5
0,5-3	± 0,2
Broken edges	
[mm]	[mm]
2000-4000	± 2
1000-2000	± 1,2
400-1000	± 0,8
120-400	± 0,5
30-120	± 0,3
6-30	± 0,2
3-6	± 0,1
0,5-3	± 0,1
Nominal dims.	Tolerance
NEN-ISO 2768-1m	Linear dimensions



DETAIL A
SCALE 2:1



$\sqrt{Ra 1,6}$ $\sqrt{Ra 0,8}$

Projectcode: 623001
Werkorder: G1005
Dimensions: 20x20x3
Material: AISI_316L_SS
Mass [kg]: kg

Shape- and dest.tol. acc. NEN-ISO 1101	Dim. tol. acc. NEN-ISO 406	General Tolerances NEN-ISO 2768-1 m	Roughness acc. NEN 3634	mm	Scale
F		Date: 2010	Name: M.Lindemulder	Project: Nustar	1:1
E		Designed		Group: GSI	A3
D		Drawn		Name:	
C	Detectorholes changed	09-12-2010	Approved	Bar	
B	Spacerholes changed	06-12-2010		Drawing number:	Sheet
A	cutout changed	23-11-2010		3;1005;1100-02_dwg	1/1
Revision		Date	Zernikelaan 25 9747AA Groningen		

400-	120-400	400-	400-
50-120	120-400	120-400	400-
10-50	50-120	50-120	120-400
O-10	10-50	10-50	50-120
Comers	O-10	O-10	10-50
l-min. comerside	Comers	Comers	Comers
tolerance	tolerance	tolerance	tolerance
[mm]	[mm]	[mm]	[mm]
6-	6-	6-	6-
3-6	3-6	3-6	3-6
0,5-3	0,5-3	0,5-3	0,5-3
Broken	Broken	Broken	Broken
edges	edges	edges	edges
[mm]	[mm]	[mm]	[mm]
2000-4000	2000-4000	2000-4000	2000-4000
± 2	± 2	± 2	± 2
1000-2000	1000-2000	1000-2000	1000-2000
± 1,2	± 1,2	± 1,2	± 1,2
400-1000	400-1000	400-1000	400-1000
± 0,8	± 0,8	± 0,8	± 0,8
120-400	120-400	120-400	120-400
± 0,5	± 0,5	± 0,5	± 0,5
30-120	30-120	30-120	30-120
± 0,3	± 0,3	± 0,3	± 0,3
6-30	6-30	6-30	6-30
± 0,2	± 0,2	± 0,2	± 0,2
3-6	3-6	3-6	3-6
± 0,1	± 0,1	± 0,1	± 0,1
0,5-3	0,5-3	0,5-3	0,5-3
± 0,1	± 0,1	± 0,1	± 0,1
Nominal dims.	Nominal dims.	Nominal dims.	Nominal dims.
Tolerance	Tolerance	Tolerance	Tolerance
NEN-ISO 2768-1m	NEN-ISO 2768-1m	NEN-ISO 2768-1m	NEN-ISO 2768-1m
Linear dimensions	Linear dimensions	Linear dimensions	Linear dimensions

