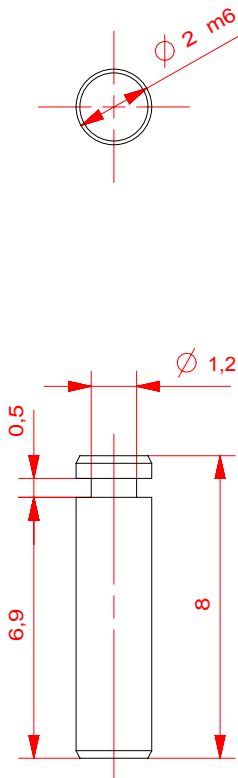


Shape- and dest.tol. acc.	Dim. tol. acc.	General Tolerances	Roughness acc.	mm	Scale
NEN-ISO 1101	NEN-ISO 406	NEN-ISO 2768-1 m	NEN 3634		1,5:1
F		Date: 2010	Name: M.Lindemulder	Project: EXL Proto	A2
E		Designed: 2010	M.Lindemulder	Group: GSI NUSTAR	
D		Drawn: 14-12-2010	M.Lindemulder	Name: Press part	
C		Cont: -			
B		vacuum grooves changed	01-04-2011		
A		top wall 0,1mm thicker	31-01-2011		
Revision	Date	Kernfysisch Versnellings Instituut Zernikelaan 25 9747AA Groningen		Drawing number: 3;1003;1440-02_dwg	Sheet 1/1



4x

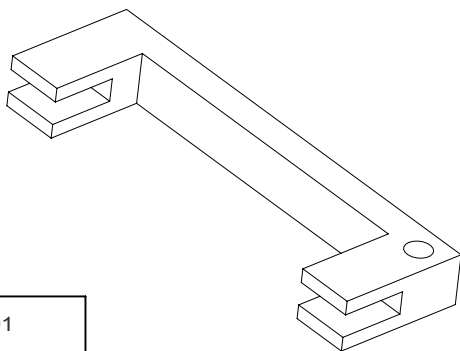
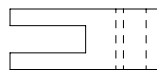
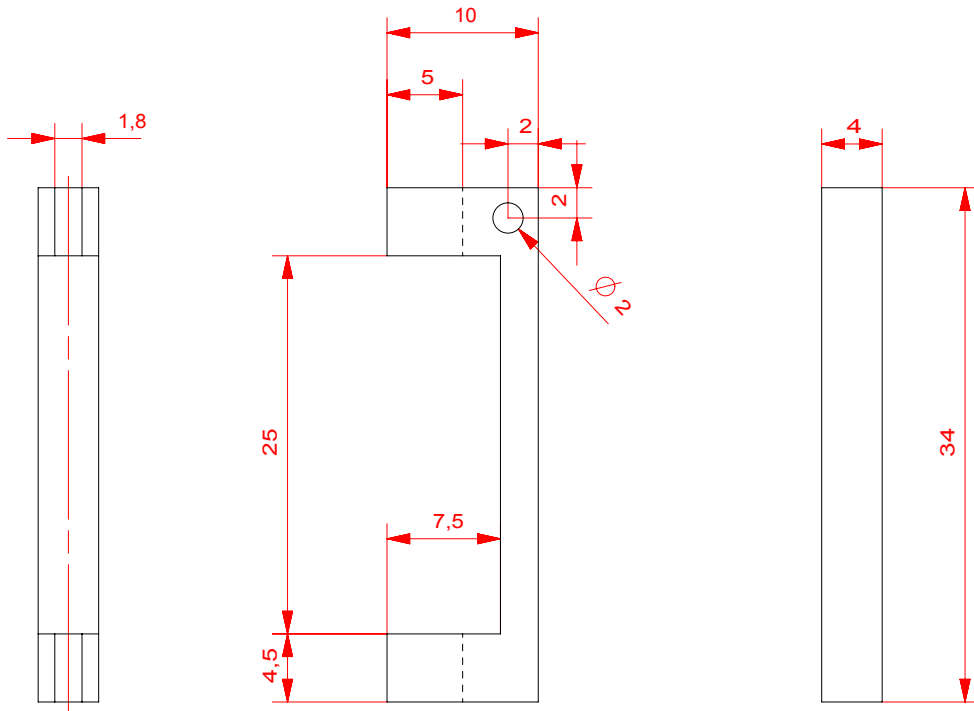
Remark: Jeveka ISO2338 2m6x8 A1



Projectcode: 623001
 Werkorder: G1003
 Dimensions: 2m6x8
 Material: AISI_301_SS
 Mass [kg]: 0

Shape- and dest.tol. acc. NEN-ISO 1101		Dim. tol. acc. NEN-ISO 406		General Tolerances NEN-ISO 2768-1 m		Roughness acc. NEN 3634		mm				Scale 5:1	
F			Date:	Name:	Project: EXL Proto								
E		Designed	2010	M.Lindemulder	Group: GSI NUSTAR								
D		Drawn	26-01-2011	M.Lindemulder	Name:								
C		Cont		-	Dowel pin								
B		Kernfysisch Versneller Instituut Zernikelaan 25 9747AA Groningen			Drawing number:							A4	
A					3;1003;1440-05_dwg								
Revision		Date									Sheet 1/1		

400-	± 0° 5'
120-400	± 0° 10'
50-120	± 0° 20'
10-50	± 0° 30'
O-10	± 1°
I-min. cornerside	
Corners	
I-min. tolerance	
6-	± 1
3-6	± 0,5
0,5-3	± 0,2
Broken edges	
2000-4000	± 2
1000-2000	± 1,2
400-1000	± 0,8
120-400	± 0,3
30-120	± 0,2
6-30	± 0,1
3-6	± 0,1
0,5-3	± 0,1
Nominal dims.	
Tolerance	
NEN-ISO 2768-1m	
Linear dimensions	



2x

Projectcode: 623001
 Werkorder: G1003
 Dimensions: 34x10x4
 Material: 51ST_(AlMgSi1)
 Mass [kg]: kg

Shape- and dest.tol. acc. NEN-ISO 1101		Dim. tol. acc. NEN-ISO 406		General Tolerances NEN-ISO 2768-1 m		Roughness acc. NEN 3634		mm		Scale 2:1
F			Date:	Name:	Project: EXL Proto					
E		Designed	2011	M.Lindemulder	Group: GSI NUSTAR					
D		Drawn	09-02-2011	M.Lindemulder	Name:					
C		Cont		-	Mount piece					
B					Drawing number:					A4
A					3;1003;1440-13_dwg					
Revision		Date		Zernikelaan 25 9747AA Groningen					Sheet 1/1	

400-	± 0° 5'
120-400	± 0° 10'
50-120	± 0° 20'
10-50	± 0° 30'
O-10	± 1°
I-min. cornerside tolerance	
Corners	
6-	± 1
3-6	± 0.5
0.5-3	± 0.2
Broken edges	
2000-4000	± 2
1000-2000	± 1.2
400-1000	± 0.8
120-400	± 0.3
30-120	± 0.2
6-30	± 0.1
3-6	± 0.1
0.5-3	± 0.1
Nominal dims.	Tolerance
NEN-ISO 2768-1m	Linear dimensions

