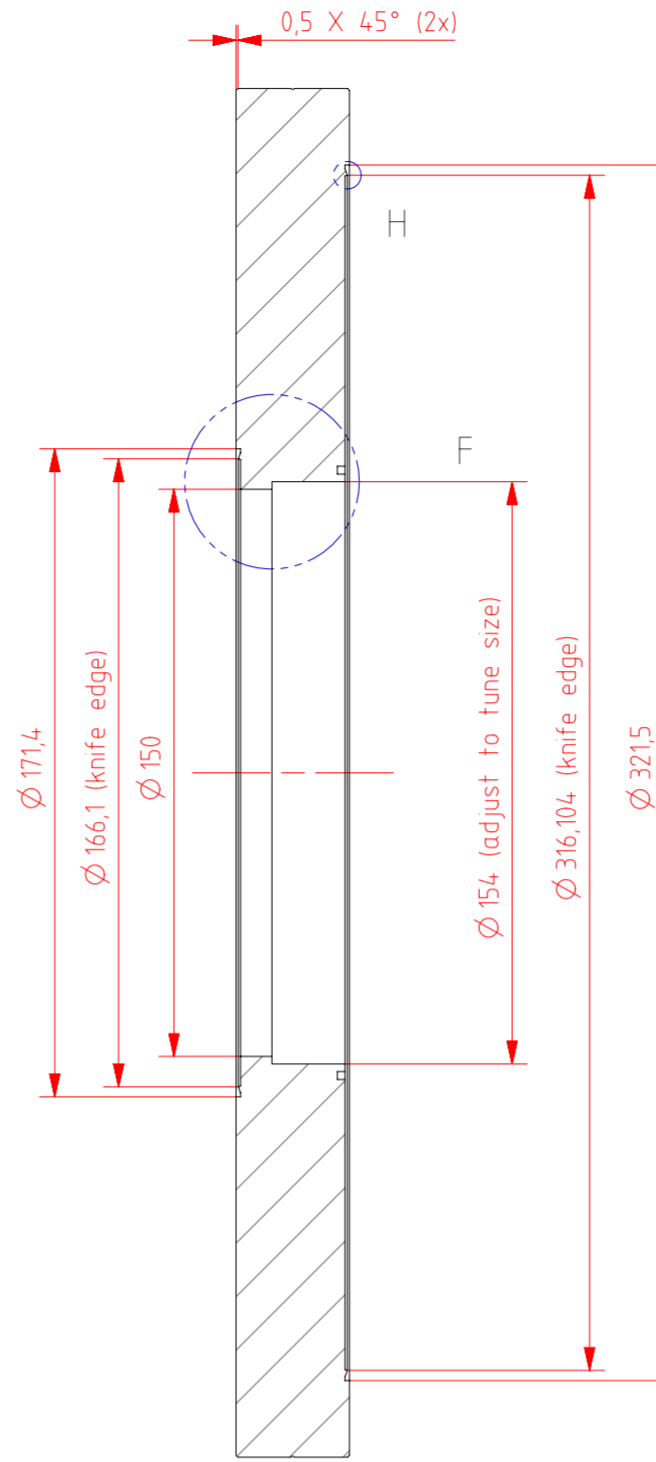
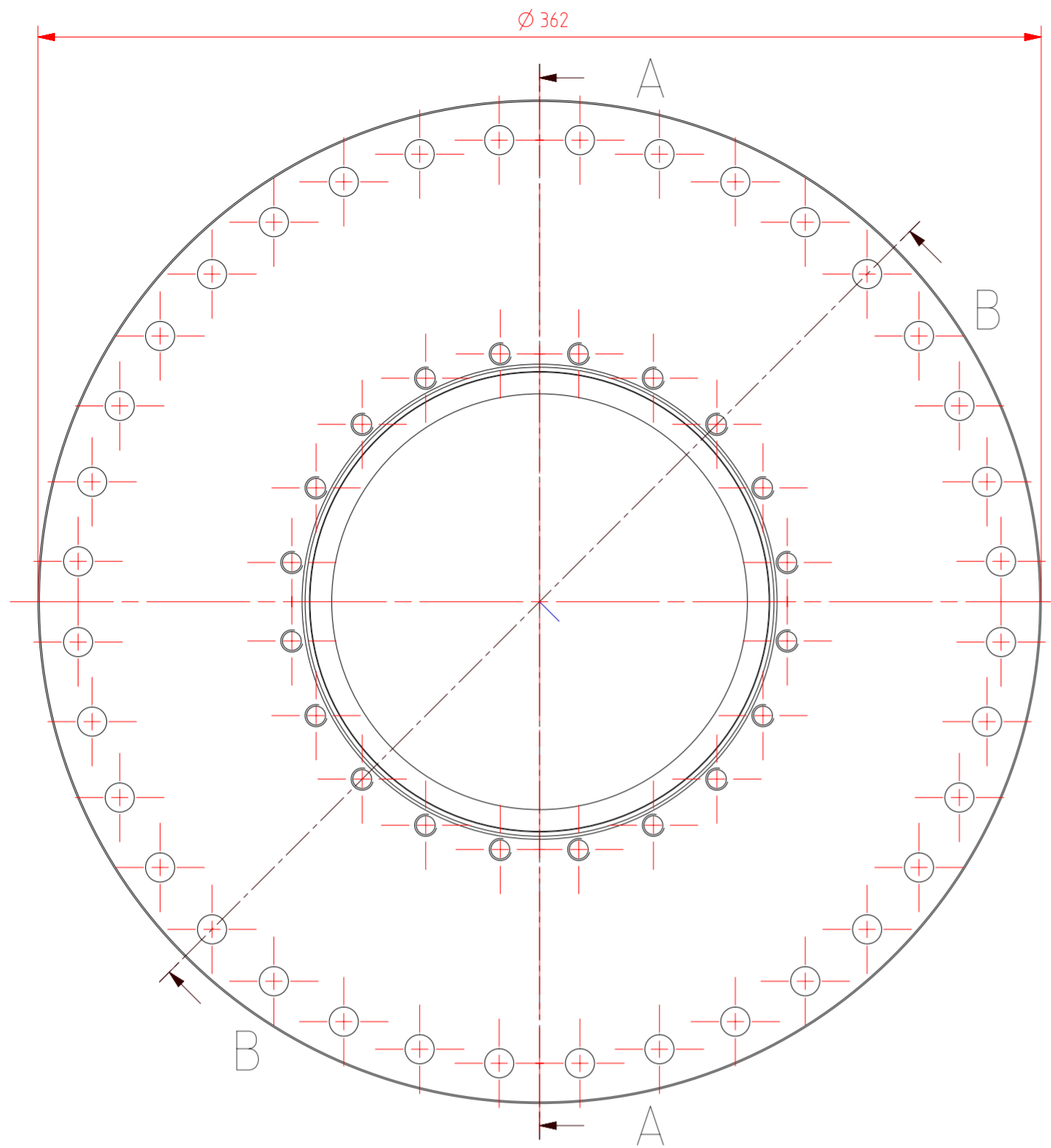


Projectcode: 623001
 Werkorder: G1003
 Dimensions:
 Material: AISI_316L(14404)
 Mass [kg]: 1,5

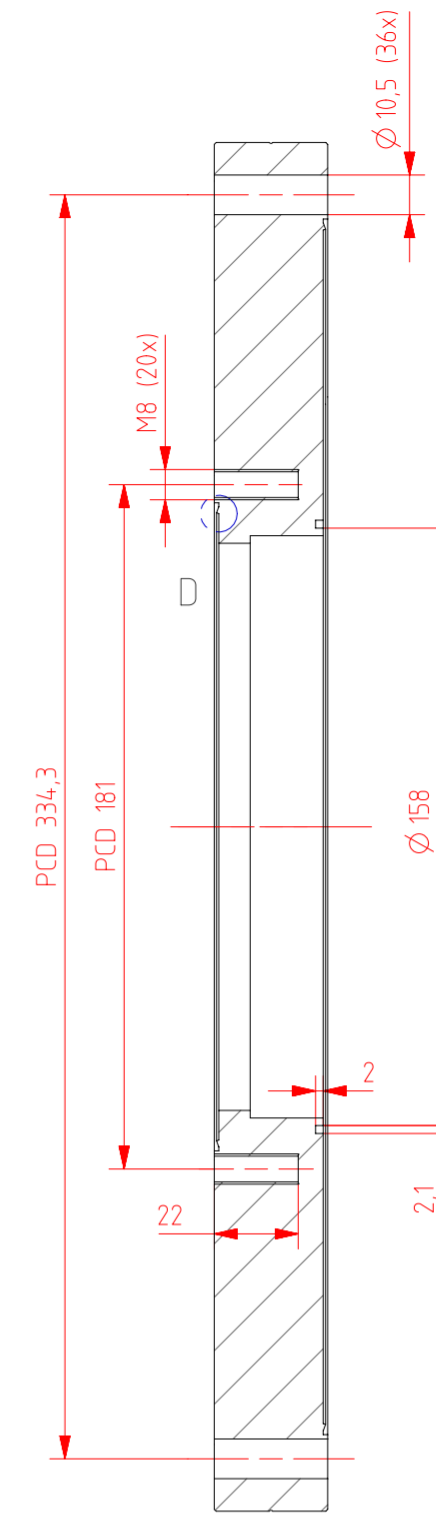
Shape- and dest.fol. acc. NEN-ISO 1101	Dim. tol. acc. NEN-ISO 406	General Tolerances NEN-ISO 2768-1m / 2768-2K	Roughness acc. NPR 3634	mm		Scale 1:2
		Date:	Name:	Project: EXL Proto		A3
		Drawn	M.Lindemulder	Group: GSI NUSTAR		
		Checked	-	Name		
		 Kernfysisch Versneller Instituut Zernikelaan 25 9747AA Groningen +31 (0)50 363 3549 / www.kvi.nl			CF160 Tube piece	
					Revision	Date
						Sheet 1/1

NEN ISO 2768-2K	Nominal dims. mm	Straightness —	f/m10	10-30	30-100	100-300	300-1000	1000-3000	Squareness	f/m100	100-300	300-1000	1000-3000	Symmetry	f/m100	100-300	300-1000	1000-3000	Circular Stroke
Geometrical tolerances	Tolerance mm	& Flatness □	0,05	0,1	0,2	0,4	0,6	0,8	⊥	0,4	0,6	0,8	1	≡	0,6	0,8	1	↗	0,2

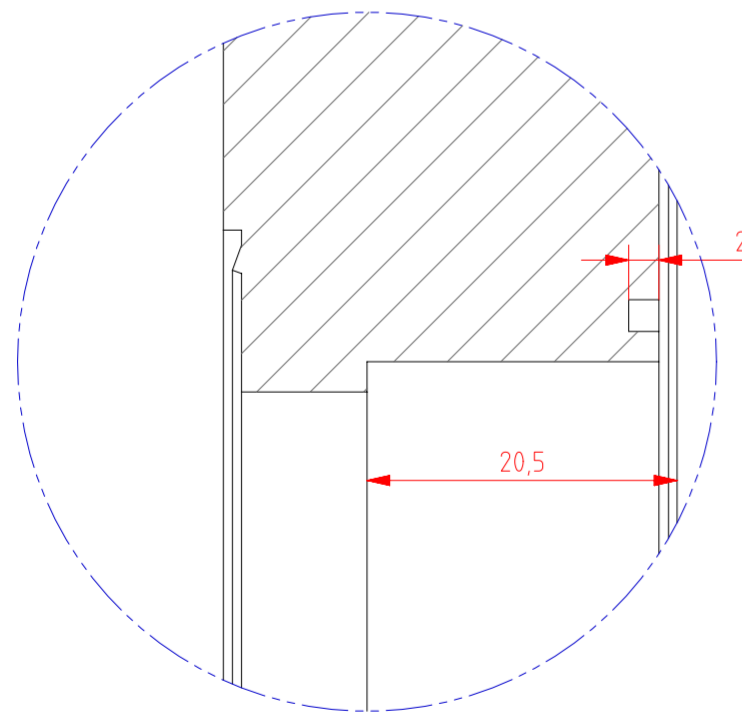
Linear dimensions	0-10	10-50	50-120	120-400	400-
Nominal dims	± 1°	± 0°30'	± 0°20'	± 0°10'	± 0°5'
Tolerance					
Broken edges	0,5-3	3-6	6-	[mm]	[mm]
	± 0,2	± 0,5	± 1		
Corners					



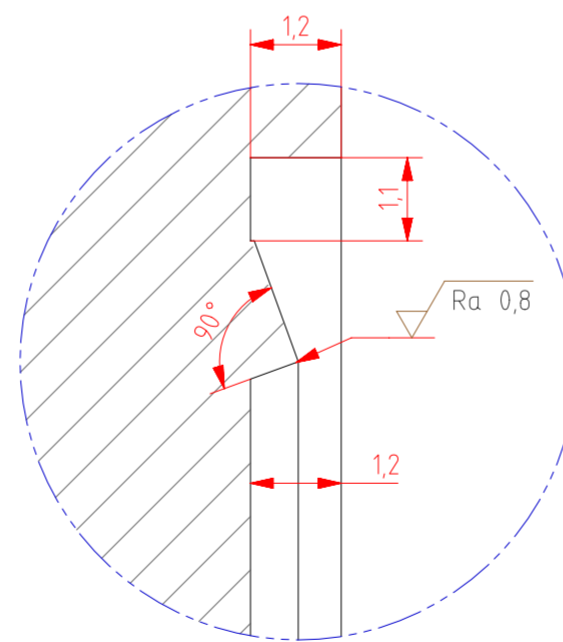
SECTION A-A



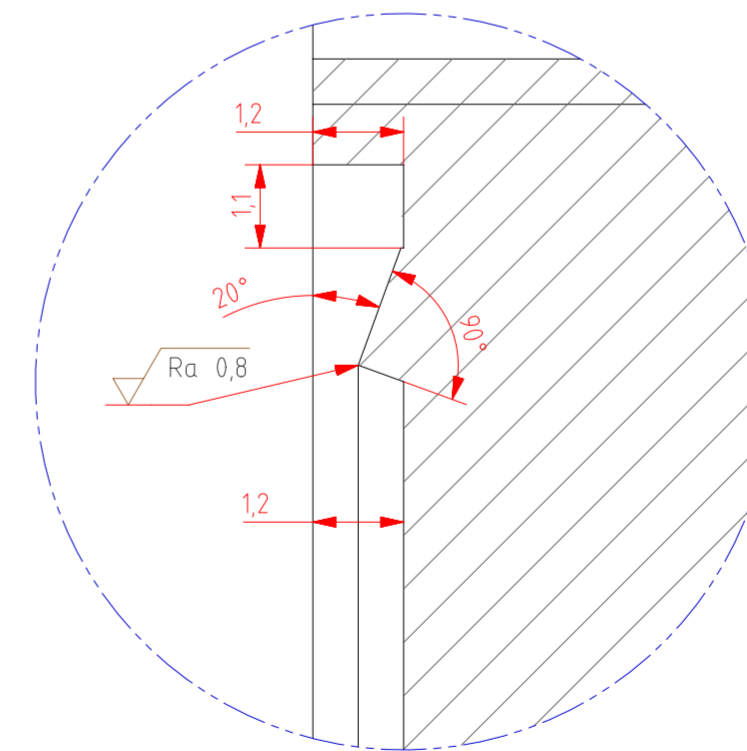
SECTION B-B



DETAIL F
SCALE 2:1



DETAIL H
SCALE 10:1



DETAIL D
SCALE 10:1

√ Ra 1,6 (√ Ra 0,8)

Projectcode: 623001
Werkorder: G1003
Dimensions: 368x28
Material: AISI-316L(1.4404)
Mass [kg]: 18,5

Shape- and dest.tol. acc. NEN-ISO 1101	Dim.tol. acc. NEN-ISO 406	General Tolerances NEN-ISO 2768-1m / 2768-2K	Roughness acc. NPR 3634	mm	Scale 12
△	△	Date: 05-2012 Name: M.Lindemulder	Project: EXL proto		A2
△	△	Checked: -	Name: CF-DN300_150 reducer		
△	△	 Kernfysisch Versnellings Instituut Zernikelaan 25 9747AA Groningen +31 (0)50 363 3549 / www.kvi.nl	Drawing number:		Sheet 1/1
△	△		Revision	Date	

NEN ISO 2768-2K	Nominal dims mm	Straightness & Flatness	f/m10	10-30	30-100	100-300	300-1000	1000-3000	Squareness	f/m100	100-300	300-1000	1000-3000	Symmetry	f/m100	100-300	300-1000	1000-3000	Circular Stroke	0,2
Geometrical tolerances	Tolerance mm		0,05	0,1	0,2	0,4	0,6	0,8	⊥	0,4	0,6	0,8	1	≡	0,6	0,8	1			